

SCHINDLER

GENERAL PURPOSE ELECTRIC FURNACES

Uses

General Purpose Steel Treating, to include: normalizing, hardening, drawing, annealing, carburizing; Non-Ferrous Heat-Treating to include aluminum, beryllium copper, etc.

Temperature and Control

2000° F

Control of this furnace is accomplished by the use of standard controlling pyrometers which are available as separate units, or in completely wired control panels. (Price Sheet gives details on 3 arrangements of control assemblies as well as on Standard Pyrometer controls).

Models

BL-1, BL-2, BL-3, BL-4, BL-5, BL-181536, BL-241836, and BL-241848.

Industrial Floor Model Box Furnace for Production

Chamber Sizes

No.	W	H	L
BL-1	12"	x8"	x18"
BL-2	12"	x8"	x24"
BL-3	12"	x8"	x36"
BL-4	15"	x12"	x30"
BL-5	15"	x12"	x36"
BL-181536	18"	x15"	x36"
BL-241836	24"	x18"	x36"
BL-241848	24"	x18"	x48"

Model BL-4 Typical of the Schindler Floor Model Box Furnace

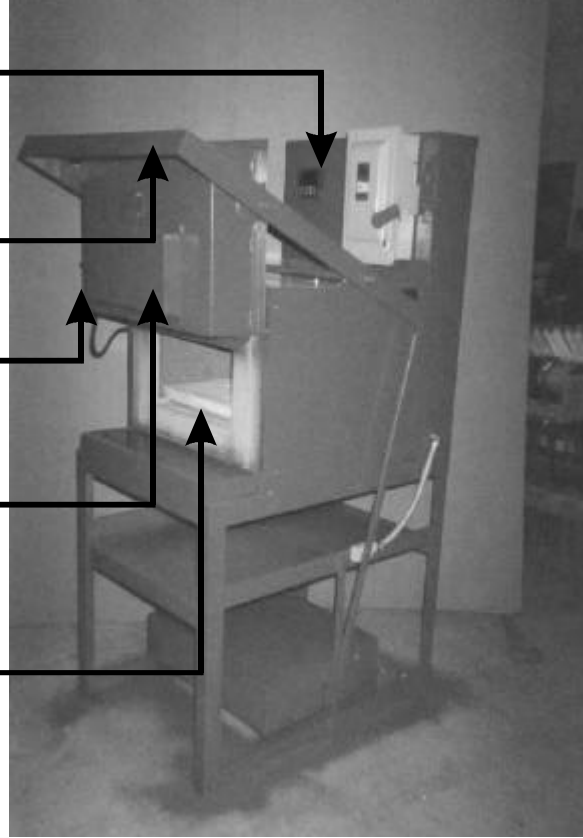
Completely wired - fully enclosed control panel - mounted integrally with the furnace

Door operating arm is operable from any position, and is balanced for easy movement.

Amazingly efficient furnace door

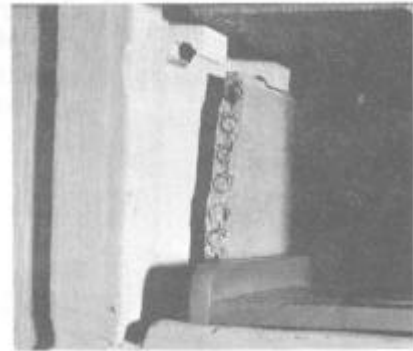
Door Element Terminal Guard.

Sand Seal prevents air infiltration



Operator demonstrates ease with which side element can be removed after disconnecting two terminal connectors

All elements are of similar slab type each with two terminals. In changing, disconnection of the terminals permits ready withdrawal through the door. Reversing procedure installs new element. Quick, easy and pronounced reduction in down time of furnace. The job can be accomplished by plant labor.



Cutaway view shows placement of Schindler heating elements to produce natural thermal convection. The slab form of element spaced from the wall provides a chimney for circulation of air. It keeps the element and wall cooler and promotes circulation of air in the chamber so necessary for rapid heating and uniform temperatures. An exclusive Schindler feature.

SCHINDLER

(317)858-8215